



LANZIERAC  
1692



Enjoy business in elegant  
historic surrounds

*Meetings, Events & Conferences*





Unique luxury offerings set  
amongst the vines of an authentic  
working wine estate.



Lanzerac provides the ideal space for meetings, events and conferences.

There are seven in-door boardrooms and conferencing options to choose from - Cellar Hall, The Loft, The Drawing Room, Buchanan's Chambers, Master's Study, The Conservatory and the Private Dining venue. The picturesque setting of the Manor Lawns also offers the perfect opportunity for exclusive outdoor events.

With high end facilities, beautiful country charm and versatile venues which cater to a wealth of occasions, the functions at Lanzerac are defined by prestige and sophistication. We signify superb luxury and exceptional service, making it the most sought-after function venue for hosting private dinners, high profile events, corporate conferences, management meetings and launches.



**LANZERAC**  
1692





# Buchanan's Chambers

## CONFERENCING

**1 July 2025 - 30 June 2026**

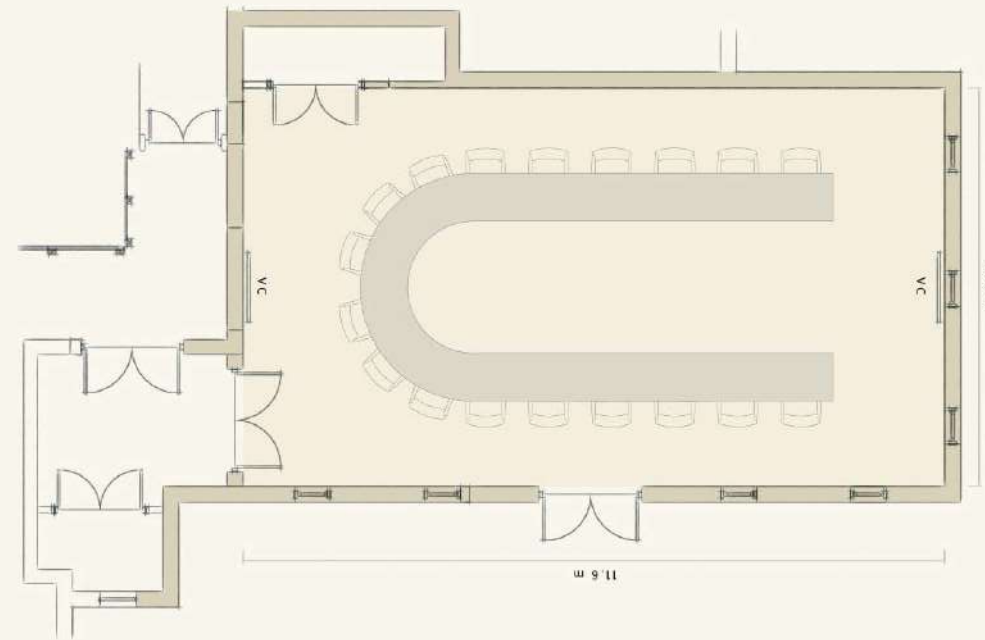
Full Day Conference Package - R970 per person

Half Day Conference Package - R900 per person

**1 July 2026 - 30 June 2027**

Full Day Conference Package - R1 050 per person

Half Day Conference Package - R980 per person



## CAPACITY

Floor Area - 21.65m<sup>2</sup>

Width - 3.67m

Length - 5.9m

Door Height - 2m

Ceiling Height - 5.7m

Boardroom - 24 Guests







# The Loft

## CONFERENCING

**1 July 2025 - 30 June 2026**

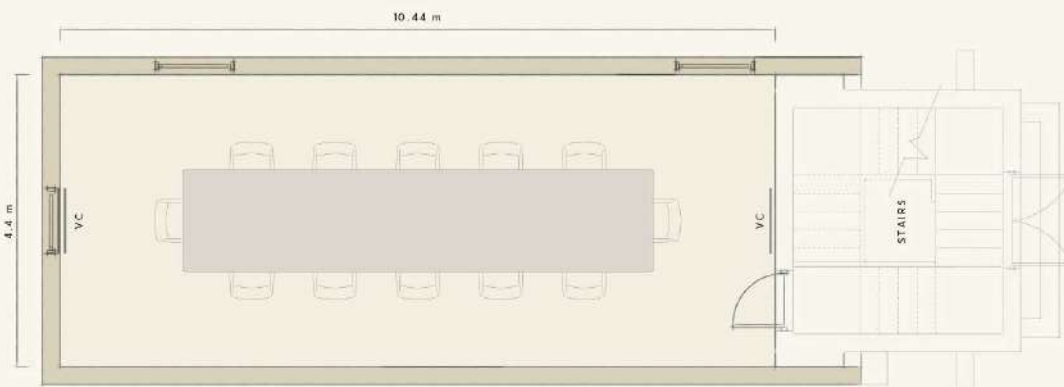
Full Day Conference Package - R970 per person

Half Day Conference Package - R900 per person

**1 July 2026 - 30 June 2027**

Full Day Conference Package - R1 050 per person

Half Day Conference Package - R980 per person



## CAPACITY

Floor Area - 45.93m<sup>2</sup>

Width - 4.4m

Length - 10.44m

Door Height - 1.85m

Ceiling Height - 2.44m

Boardroom - 12 Guests







# Cellar Hall

## CONFERENCING

**1 July 2025 - 30 June 2026**

Full Day Conference Package - R970 per person

Half Day Conference Package - R900 per person

**1 July 2026 - 30 June 2027**

Full Day Conference Package - R1 050 per person

Half Day Conference Package - R980 per person

## FUNCTIONS

**Venue Hire:**

R60 000

**Includes:**

Cocktail tables with high back leather chairs

Round tables and banquet chairs

Round table cloth 3.3m in diameter and napkins

Cutlery, crockery and glassware for maximum capacity

Physical bar set-up, condiments, ice, glasses and barmen

Black and white chequered dance floor (5m x 6m)

Waiter service, DJ trestle table

**Excludes:**

Stationery, Food and beverage cost, Service gratuity,

All external supplier services i.e. DJ / photographer / décor & flowers

## CAPACITY

Floor Area - 193.98m<sup>2</sup>

Width - 10.6m

Length - 18.3m

Door Height - 2.64m

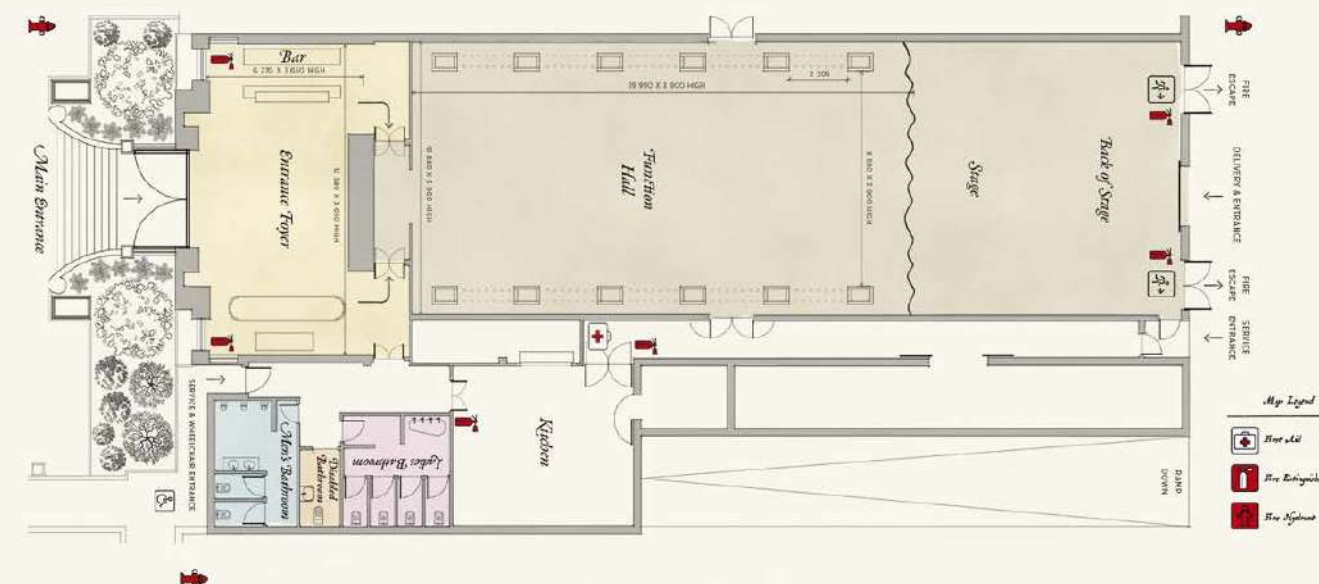
Ceiling Height - 3.9m

Banquet - 150 Guests

School Room - 120 Guests

Cinema - 200 Guests

U-Shape - 30 Guests







# Cellar Hall - Foyer

## EXCLUSIVE DINING

**Setup Cost:**  
R15 000

**Includes:**

One long table (min 6 guests, max 10 guests)  
Banquet chairs, standard white napkins  
Cutlery, crockery and glassware  
Waiter service

**Excludes:**

Food and beverage costs  
Service gratuity  
All external supplier services i.e.  
DJ / photographer / décor and flowers  
Stationery

## FUNCTIONS

**Venue Hire:**  
R20 000 (Monday to Thursday) | R25 000 (Friday to Sunday)

**Includes:**

Cocktail tables with leather high back chairs  
or 3 round tables with standard white linen  
Cutlery, crockery and glassware  
Physical bar set up, condiments, ice, glasses and barmen  
Waiter service

**Excludes:**

Food and beverage costs  
Service gratuity  
Décor and flowers  
Stationery

## CAPACITY

Floor Area - 193.98m2  
Width - 10.6m  
Length - 18.3m

Door Height - 2.64m  
Ceiling Height - 3.9m

Cocktail - 40 Guests  
School room - 12 Guests  
U shape - 15 Guests  
Boardroom - 20 Guests







# The Drawing Room

## CONFERENCING

**1 July 2025 - 30 June 2026**

Full Day Conference Package - R970 per person

Half Day Conference Package - R900 per person

**1 July 2026 - 30 June 2027**

Full Day Conference Package - R1 050 per person

Half Day Conference Package - R980 per person

## EXCLUSIVE DINING

**Venue Hire:**

R9 000

**Includes:**

One long 14-seater table  
(min 6 guests, max 14 guests)

Leather chairs

Standard white napkins

Cutlery, crockery and glassware

Printed menus

Waiter service

**Excludes:**

Food and beverage costs

Service gratuity

Décor and flowers

## CAPACITY

Floor Area - 45.60m2

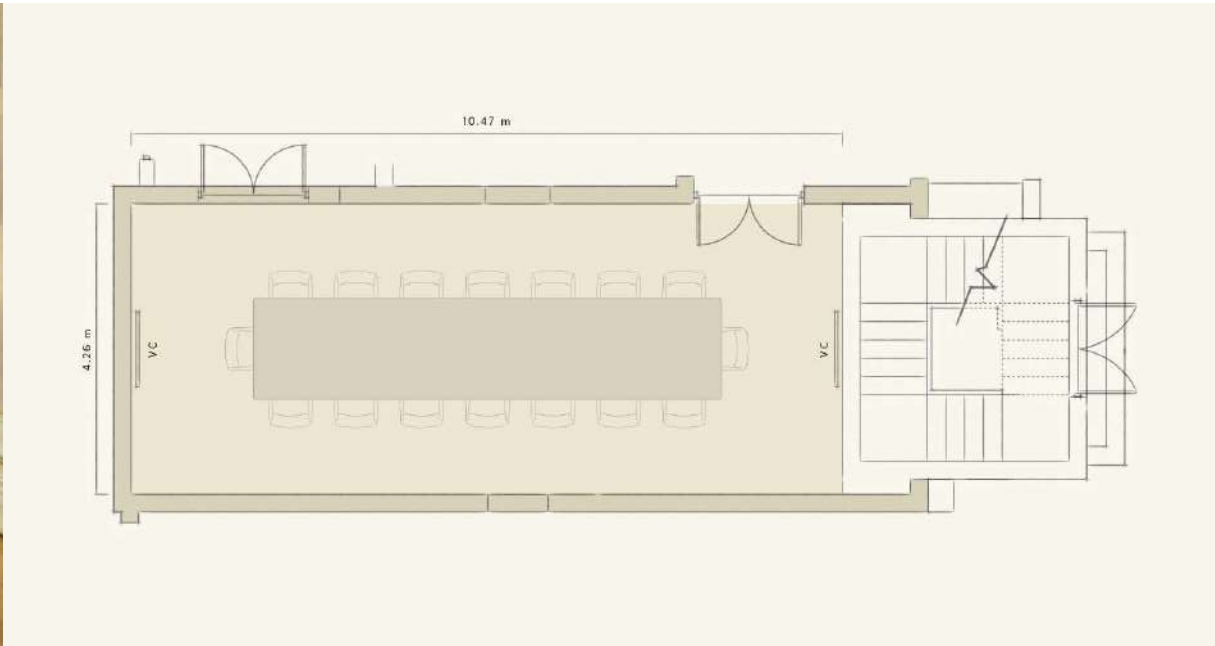
Width - 4.26m

Length - 10.47m

Door Height - 1.85m

Ceiling Height - 2.46m

Boardroom - 15 Guests







# Master's Study

## CONFERENCING

**1 July 2025 - 30 June 2026**

Full Day Conference Package - R970 per person

Half Day Conference Package - R900 per person

**1 July 2026 - 30 June 2027**

Full Day Conference Package - R1 050 per person

Half Day Conference Package - R980 per person

## EXCLUSIVE DINING

**Venue Hire:**

R9 000

**Includes:**

One long 8-seater table  
(min 6 guests, max 8 guests)

Leather chairs

Standard white napkins

Cutlery, crockery and glassware

Printed menus

Waiter service

**Excludes:**

Food and beverage costs

Service gratuity

Décor and flowers

## CAPACITY

Floor Area - 21.65m<sup>2</sup>

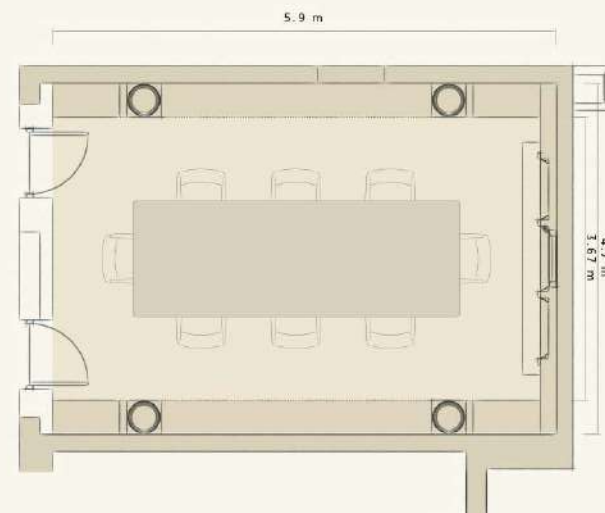
Width - 3.67m

Length - 5.9m

Door Height - 2m

Ceiling Height - 5.7m

Boardroom - 8 Guests







# The Conservatory

## CONFERENCING

**1 July 2025 - 30 June 2026**

Full Day Conference Package - R970 per person

Half Day Conference Package - R900 per person

**1 July 2026 - 30 June 2027**

Full Day Conference Package - R1 050 per person

Half Day Conference Package - R980 per person

## EXCLUSIVE DINING

**Venue Hire:**

R9 000

**Includes:**

One long 12-seater table  
(min 6 guests, max 12 guests)

Leather chairs

Standard white napkins

Cutlery, crockery and glassware

Printed menus

Waiter service

**Excludes:**

Food and beverage costs

Service gratuity

Décor and flowers

## CAPACITY

Floor Area - 20.05m<sup>2</sup>

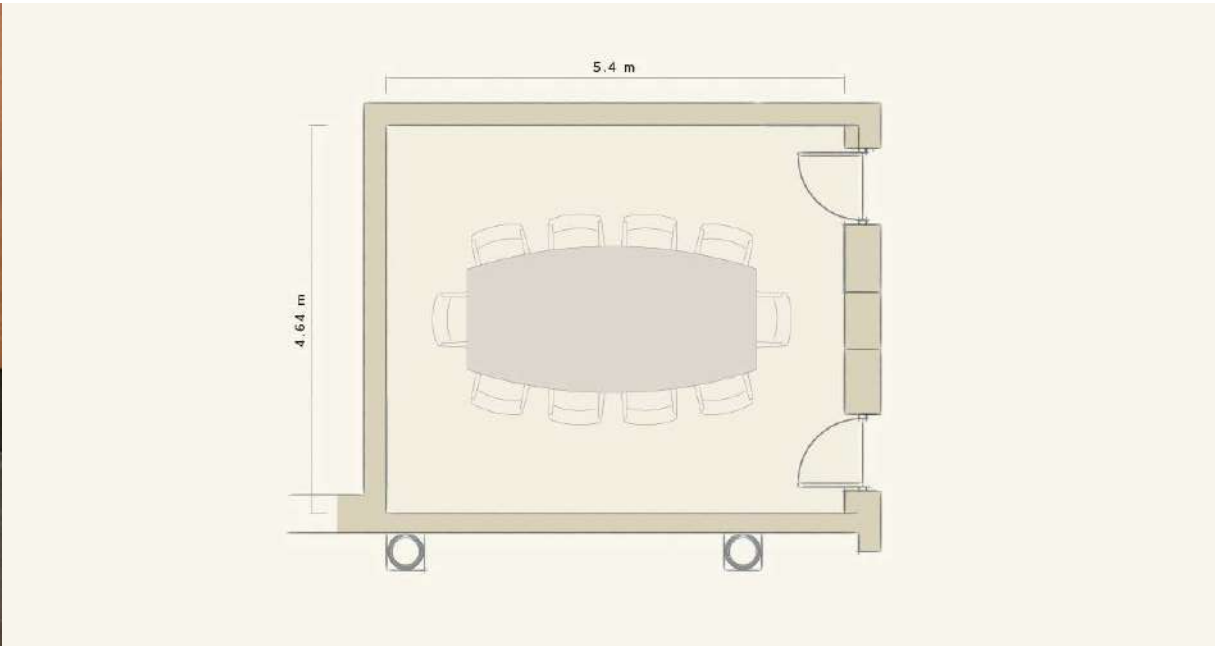
Width - 4.64m

Length - 5.4m

Door Height - 1.9m

Ceiling Height - 3m

Boardroom - 10 Guests







# Tasting Room & Deli

## EXCLUSIVE DINING & FUNCTIONS

Min 15 Guests, Max 40 Guests, Max 80 Guests cocktail style

\*Capacity subject to change due to legislation

### Venue hire:

R35 000 (Friday to Sunday)

R25 000 (Monday - Thursday)

### Includes:

Tables and chairs

White Linen napkins

Cutlery, crockery and glassware

Physical bar setup, condiments,  
ice, glasses and barmen

Waiter service

### Excludes:

Food and beverage costs

Service gratuity

Décor and flowers







# The Private Dining Room

## EXCLUSIVE DINING & FUNCTIONS

Min 15 Guests, Max 40 Guests

\*Capacity subject to change due to legislation

**Venue hire:**  
R28 000

**Includes:**  
Tables and chairs  
White Linen napkins and table cloths  
Cutlery, crockery and glassware  
Physical bar setup, condiments,  
ice, glasses and barmen  
Waiter service

**Excludes:**  
Food and beverage costs  
Service gratuity  
Décor and flowers







## Our day conference packages include:

### FULL DAY PACKAGE

**1 July 2025 - 30 June 2026**

Full Day Conference Package - R970 per person

**1 July 2026 - 30 June 2027**

Full Day Conference Package - R1 050 per person

**Your full rate for the Full Day Package includes the following:**

Room hire and setup by the Lanzerac Team  
Unlimited WiFi usage  
Usage of Screen/LED, HDMI connection and multiplugs -  
Ideal for hybrid meetings  
Podiums and flip charts  
Notepad and pen per person  
Still and sparkling water  
Arrival tea/coffee with snacks, mid-morning tea/coffee and  
afternoon tea/coffee with sweet treats  
Two course set menu at the Manor Kitchen

### HALF DAY PACKAGE

**1 July 2025 - 30 June 2026**

Half Day Conference Package - R900 per person

**1 July 2026 - 30 June 2027**

Half Day Conference Package - R980 per person

**Your full rate for the Half Day Package includes the following:**

Room hire and setup by the Lanzerac Team  
Unlimited WiFi usage  
Usage of Screen/LED, HDMI connection and multiplugs -  
Ideal for hybrid meetings  
Podiums and flip charts  
Notepad and pen per person  
Still and sparkling water  
Arrival tea/coffee with snacks and mid-morning  
or afternoon tea/coffee  
Two course set menu at the Manor Kitchen

**Half Day Morning:**

08h00 - 13h00, including lunch

**Half Day Afternoon:**

12h00 - 17h00, including lunch

### HOURLY PACKAGE

**1 July 2025 - 30 June 2026**

R1 730 per hour

**1 July 2026 - 30 June 2027**

R1 870 per hour

For up to 15 guests and includes room setup by the Lanzerac Team, arrival tea/coffee with savoury snacks, notepad and pen per person, still/sparkling water, usage of Screen/LED, HDMI connection and multiplugs, ideal for hybrid meetings and unlimited WiFi.

**Additional items not included but available:  
(Price on request)**

Halaal/Kosher meals are charged  
PA System with one microphone  
Additional microphone  
Additional flip chart  
Data projector  
Conference phone  
Specialized technician  
Hybrid facilities

\*Evening Conferences - Quote on request



# Contact Us

Stellenbosch, Cape Winelands, South Africa  
Lanzerac Road, Stellenbosch, 7600

+27 (0)21 887 1132 | [events@lanzerac.co.za](mailto:events@lanzerac.co.za)  
[www.lanzerac.co.za](http://www.lanzerac.co.za) | [!\[\]\(919a2cb85b99741a73c0c31a427236a8\_img.jpg\)](#) [!\[\]\(c9cd5a1c35167a83f09a35036fe5dcbd\_img.jpg\)](#) [!\[\]\(ae1936640fabdea8c18f922ca69733fe\_img.jpg\)](#) @lanzeracestate

