



LANZERAC
1692

Enjoy business in elegant
historic surrounds

Meetings, Events & Conferences





Unique luxury offerings set
amongst the vines of an authentic
working wine estate.



Lanzerac provides the ideal space for meetings, events and conferences.

There are seven in-door boardrooms and conferencing options to choose from - Cellar Hall, The Loft, The Drawing Room, Buchanan's Chambers, Master's Study, The Conservatory and the Private Dining venue. The picturesque setting of the Manor Lawns also offers the perfect opportunity for exclusive outdoor events.

With high end facilities, beautiful country charm and versatile venues which cater to a wealth of occasions, the functions at Lanzerac are defined by prestige and sophistication. We signify superb luxury and exceptional service, making it the most sought-after function venue for hosting private dinners, high profile events, corporate conferences, management meetings and launches.



LANZERAC
1692



Buchanan's Chambers

CONFERENCING

1 July 2023 - 30 June 2024

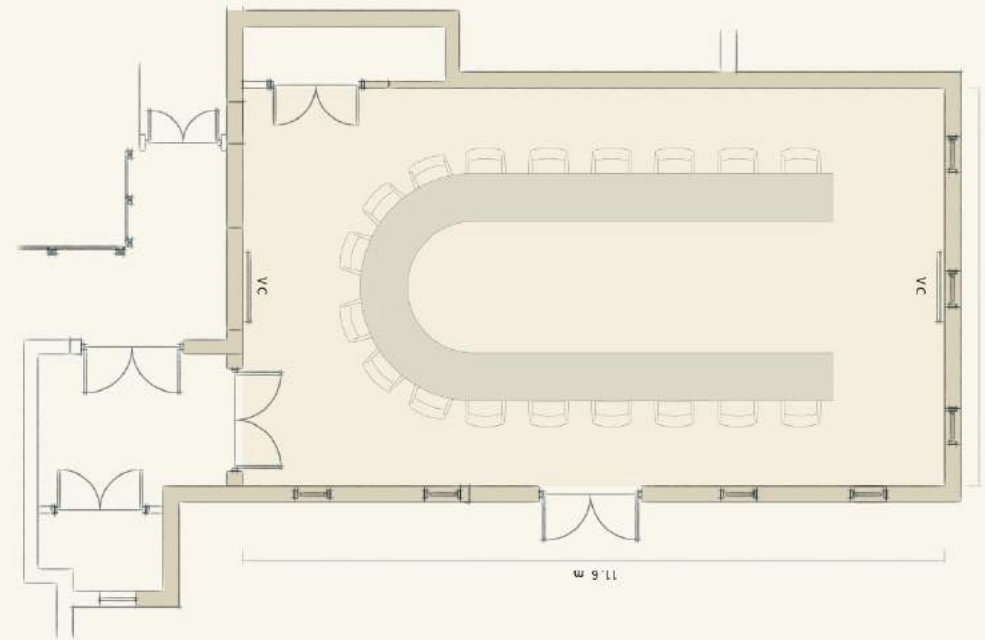
Full Day Conference Package - R815

Half Day Conference Package - R715

1 July 2024 - 30 June 2025

Full Day Conference Package - R905

Half Day Conference Package - R795



CAPACITY

Floor Area - 21.65m²

Width - 3.67m

Length - 5.9m

Door Height - 2m

Ceiling Height - 5.7m

Boardroom - 24 Pax





The Loft

CONFERENCING

1 July 2023 - 30 June 2024

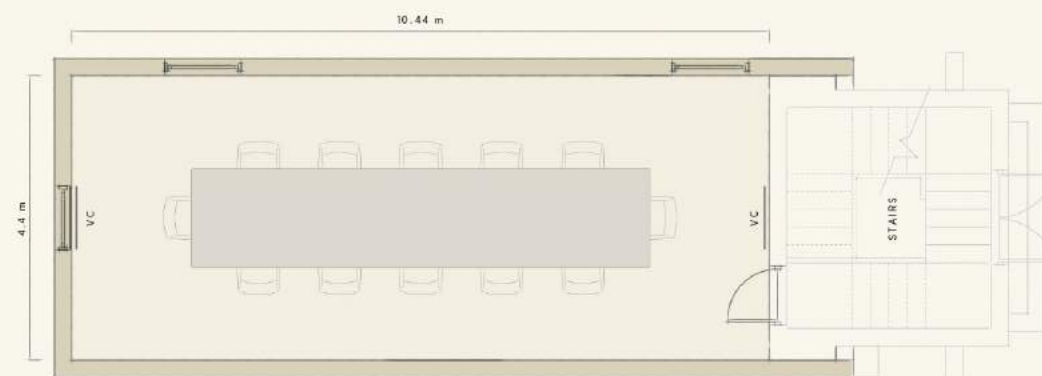
Full Day Conference Package - R815

Half Day Conference Package - R715

1 July 2024 - 30 June 2025

Full Day Conference Package - R905

Half Day Conference Package - R795



CAPACITY

Floor Area - 45.93m²

Width - 4.4m

Length - 10.44m

Door Height - 1.85m

Ceiling Height - 2.44m

Boardroom - 12 Pax





Cellar Hall

CONFERENCING

1 July 2023 - 30 June 2024

Full Day Conference Package - R815

Half Day Conference Package - R715

1 July 2024 - 30 June 2025

Full Day Conference Package - R905

Half Day Conference Package - R795

FUNCTIONS

Venue hire:

R38 000 (Monday to Thursday) | R53 000 (Friday to Sunday)

Includes:

Cocktail tables with high back leather chairs

Round tables and banquet chairs

Round table cloth 3.3m in diameter and napkins

Cutlery, crockery and glassware for maximum capacity

Physical bar set-up, condiments, ice, glasses and barmen

Black and white chequered dance floor (5m x 6m)

Waiter service, DJ trestle table

Excludes:

Stationery, Food and beverage cost, Service gratuity,

All external supplier services i.e. DJ / photographer / décor & flowers

CAPACITY

Floor Area - 193.98m²

Width - 10.6m

Length - 18.3m

Door Height - 2.64m

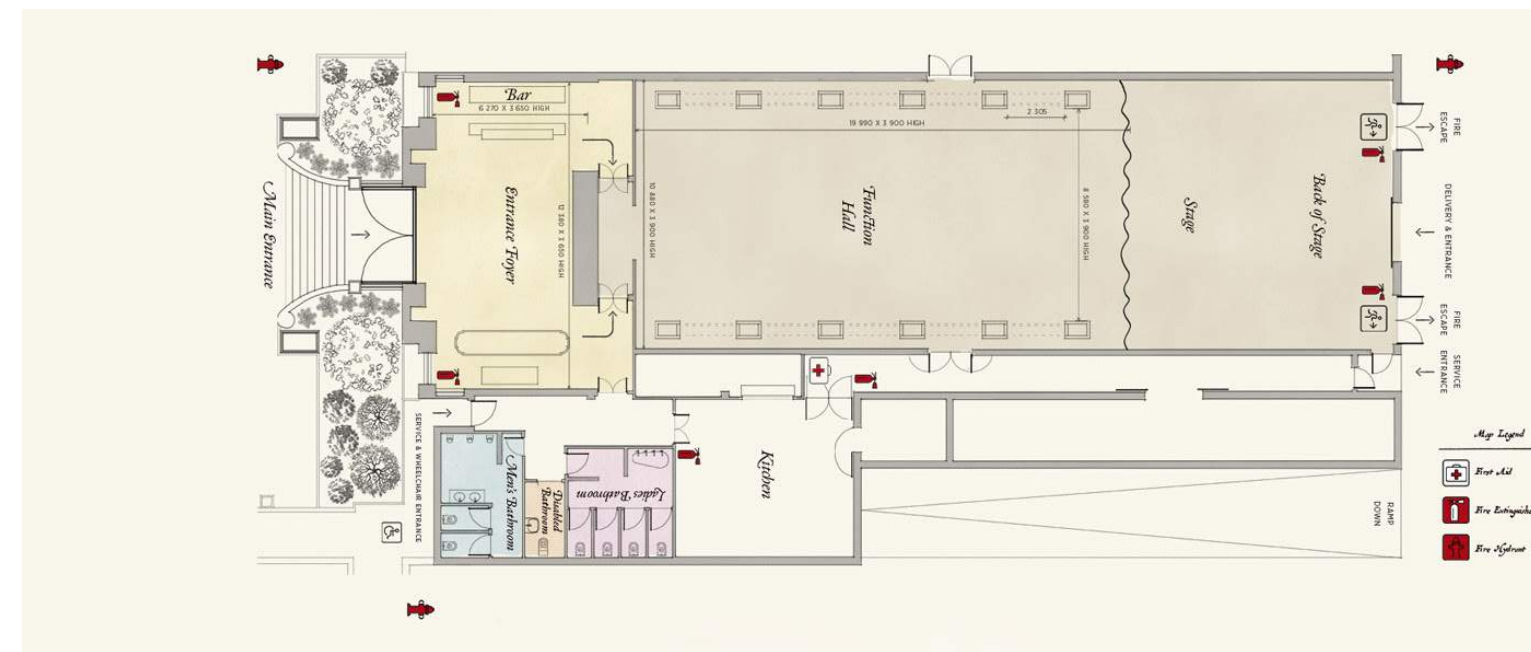
Ceiling Height - 3.9m

Banquet - 180 Pax

School Room - 150 Pax

Cinema - 200 Pax

U-Shape - 30 Pax





Cellar Hall - Foyer

EXCLUSIVE DINING

Setup Cost: R10 000

Includes:

- One long table (min 6 guests, max 10 guests)
- Banquet chairs, standard white napkins
- Cutlery, crockery and glassware
- Waiter service

Excludes:

- Food and beverage costs
- Service gratuity
- All external supplier services i.e.
DJ / photographer / décor and flowers
- Stationery

FUNCTIONS

Venue hire:

R15 000 (Monday to Thursday) | R20 000 (Friday to Sunday)

Includes:

- Cocktail tables with leather high back chairs
or 3 round tables with standard white linen
- Cutlery, crockery and glassware
- Physical bar set up, condiments, ice, glasses and barmen
- Waiter service

Excludes:

- Food and beverage costs
- Service gratuity
- Décor and flowers
- Stationery

CAPACITY

Floor Area - 193.98m2
Width - 10.6m
Length - 18.3m

Door Height - 2.64m
Ceiling Height - 3.9m

Cocktail - 40 Pax
School room - 12 Pax
U shape - 15 Pax
Boardroom - 20 Pax





The Drawing Room

CONFERENCING

1 July 2023 - 30 June 2024

Full Day Conference Package - R815

Half Day Conference Package - R715

1 July 2024 - 30 June 2025

Full Day Conference Package - R905

Half Day Conference Package - R795

EXCLUSIVE DINING

Venue hire:

R8 000

Includes:

One long 14-seater table

(min 6 guests, max 14 guests)

Leather chairs

Standard white napkins

Cutlery, crockery and glassware

Printed menus

Waiter service

Excludes:

Food and beverage costs

Service gratuity

Décor and flowers

CAPACITY

Floor Area - 45.60m²

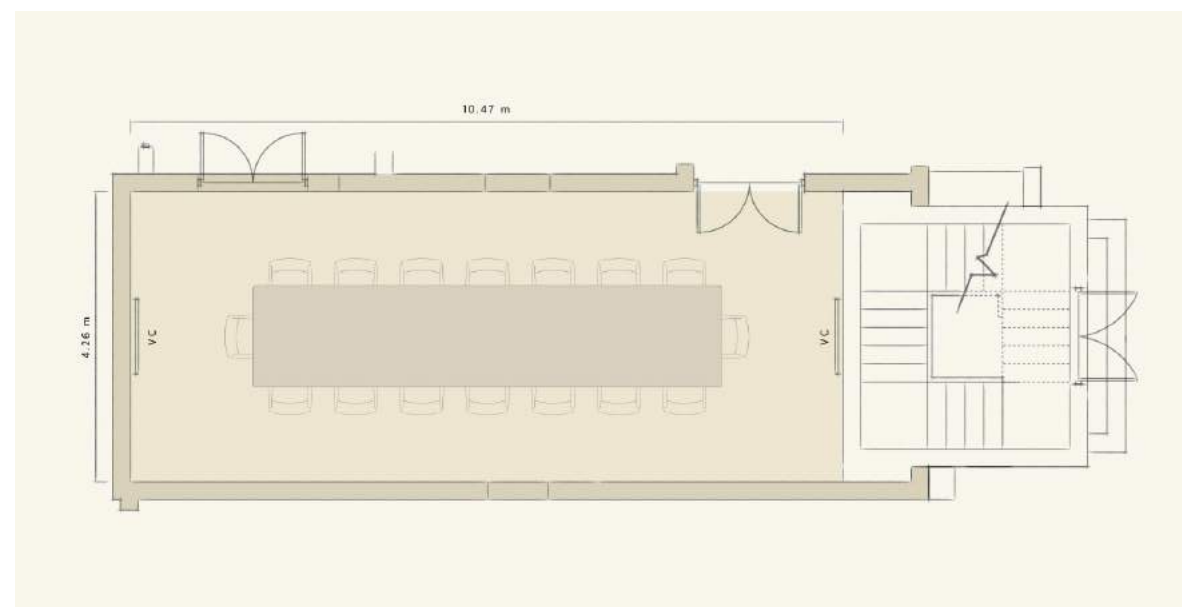
Width - 4.26m

Length - 10.47m

Door Height - 1.85m

Ceiling Height - 2.46m

Boardroom - 20 Pax





Master's Study

CONFERRNCING

1 July 2023 - 30 June 2024

Full Day Conference Package - R815

Half Day Conference Package - R715

1 July 2024 - 30 June 2025

Full Day Conference Package - R905

Half Day Conference Package - R795

EXCLUSIVE DINING

Venue hire:

R8 000

Includes:

One long 8-seater table

(min 6 guests, max 8 guests)

Leather chairs

Standard white napkins

Cutlery, crockery and glassware

Printed menus

Waiter service

Excludes:

Food and beverage costs

Service gratuity

Décor and flowers

CAPACITY

Floor Area - 21.65m²

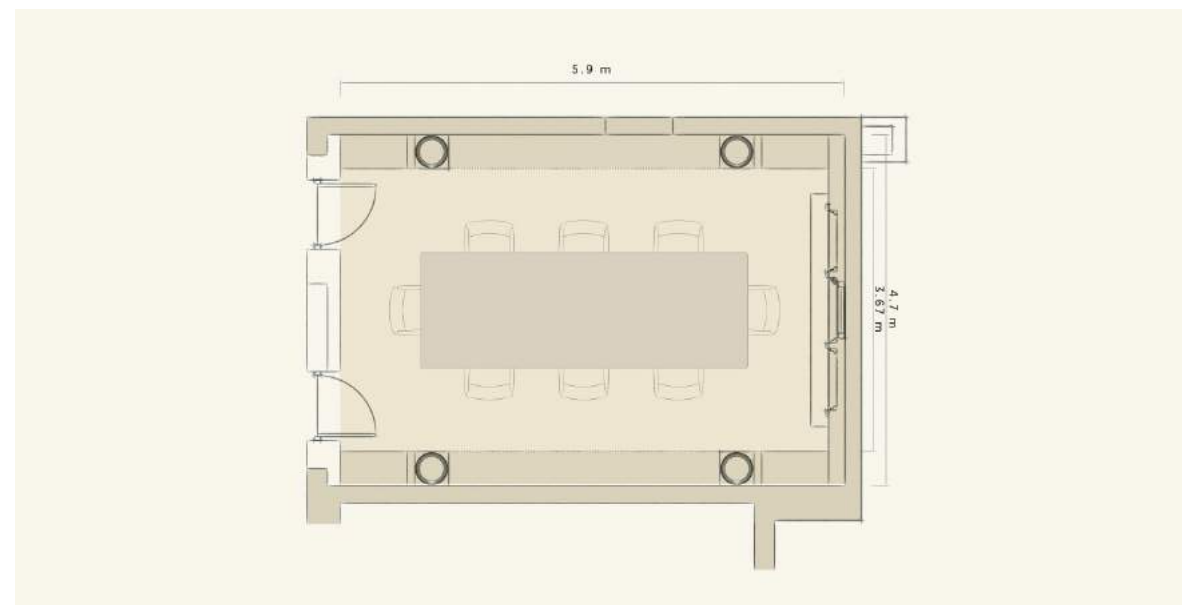
Width - 3.67m

Length - 5.9m

Door Height - 2m

Ceiling Height - 5.7m

Boardroom - 8 Pax





The Conservatory

CONFERENCING

1 July 2023 - 30 June 2024

Full Day Conference Package - R815

Half Day Conference Package - R715

1 July 2024 - 30 June 2025

Full Day Conference Package - R905

Half Day Conference Package - R795

EXCLUSIVE DINING

Venue hire:

R8 000

Includes:

One long 12-seater table

(min 6 guests, max 12 guests)

Leather chairs

Standard white napkins

Cutlery, crockery and glassware

Printed menus

Waiter service

Excludes:

Food and beverage costs

Service gratuity

Décor and flowers

CAPACITY

Floor Area - 20.05m²

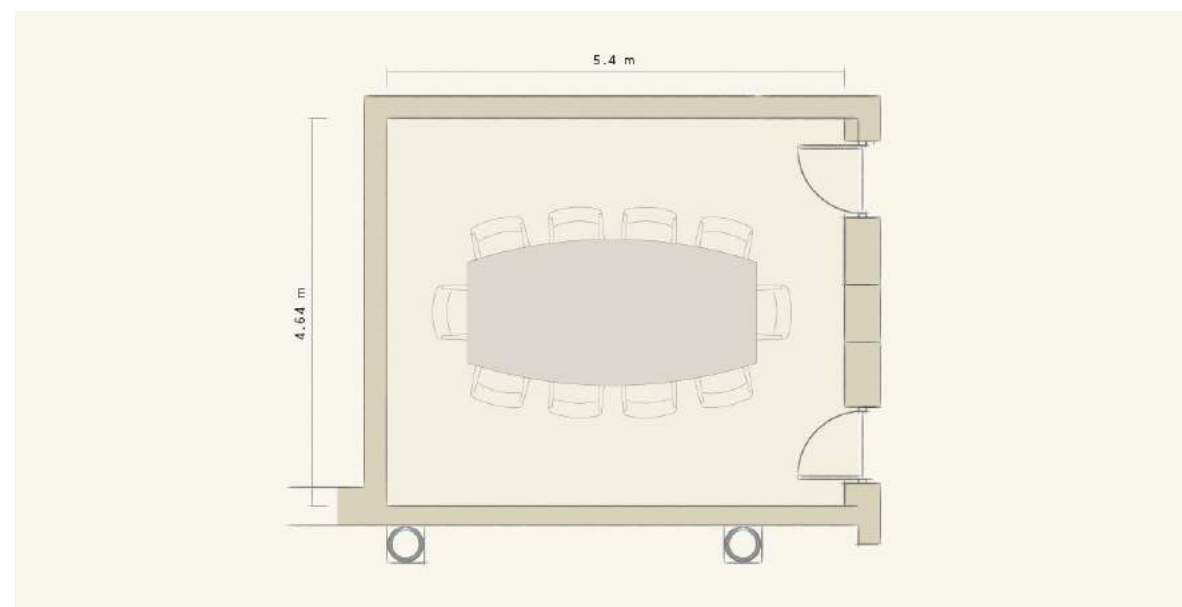
Width - 4.64m

Length - 5.4m

Door Height - 1.9m

Ceiling Height - 3m

Boardroom - 10 Pax





Tasting Room

EXCLUSIVE DINING & FUNCTIONS

Min 15 guests, Max 40 guests, Max 80 guests cocktail style

*Capacity subject to change due to legislation

Venue hire:

R20 000 (Friday to Sunday)

R15 000 (Monday - Thursday)

Includes:

Tables and chairs

White Linen napkins

Cutlery, crockery and glassware

Physical bar setup, condiments,

ice, glasses and barmen

Waiter service

Excludes:

Food and beverage costs

Service gratuity

Décor and flowers





The Private Dining Room

EXCLUSIVE DINING & FUNCTIONS

Min 15 guests, Max 40 guests

*Capacity subject to change due to legislation

Venue hire:

R20 000

Includes:

Tables and chairs

White Linen napkins and table cloths

Cutlery, crockery and glassware

Physical bar setup, condiments,

ice, glasses and barmen

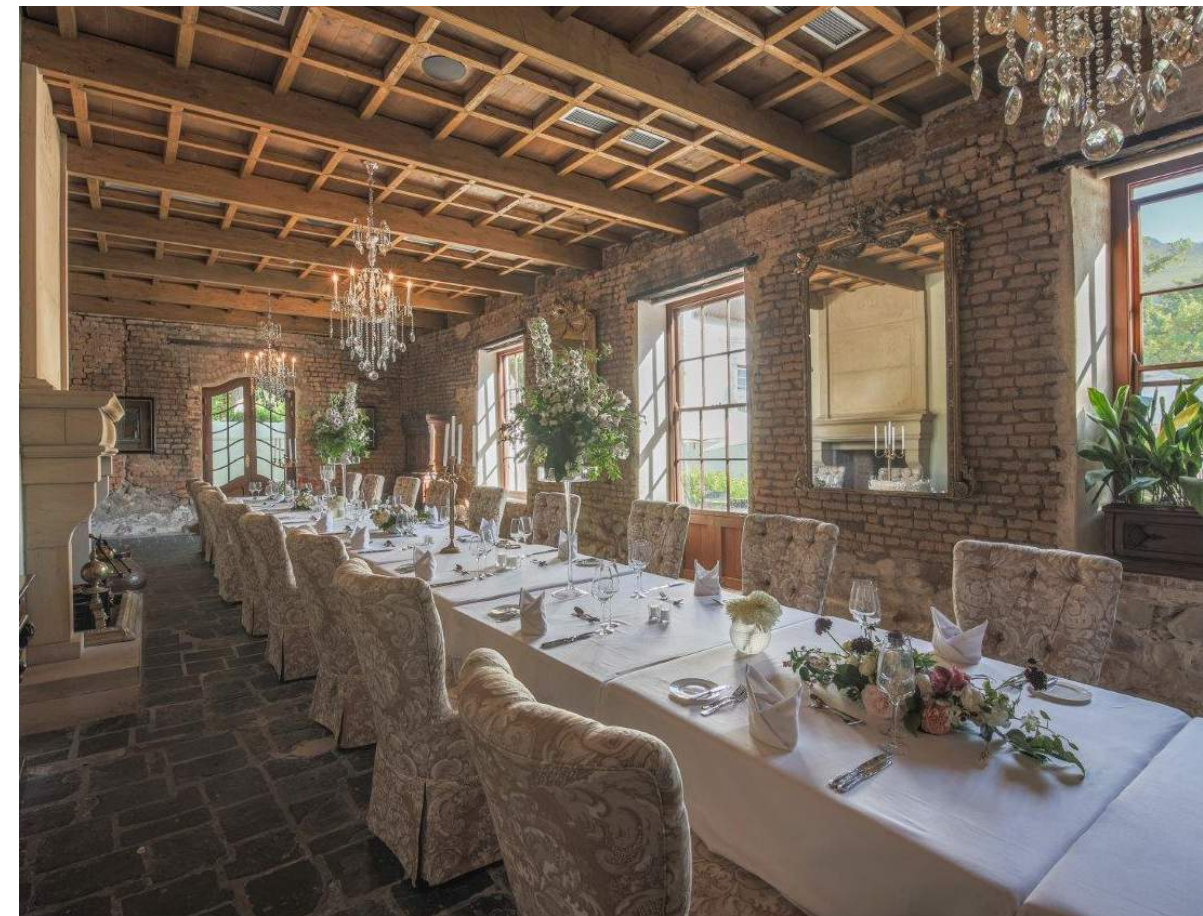
Waiter service

Excludes:

Food and beverage costs

Service gratuity

Décor and flowers





Our day conference packages include:

FULL DAY PACKAGE

1 July 2023 - 30 June 2024

Full Day Conference Package - R815

1 July 2024 - 30 June 2025

Full Day Conference Package - R905

HALF DAY PACKAGE

1 July 2023 - 30 June 2024

Half Day Conference Package - R715

1 July 2024 - 30 June 2025

Half Day Conference Package - R795

HOURLY PACKAGE

1 July 2023 - 30 June 2024

R1450 per hour

1 July 2024 - 30 June 2025

R1595 per hour

Your full rate for the Full Day Package includes the following:

Room hire and setup by the Lanzerac Team

Unlimited WiFi usage

Usage of Screen/LED, HDMI connection and multiplugs -

Ideal for hybrid meetings

Podiums and flip charts

Notepad and pen per person

Still and sparkling water

Arrival tea/coffee/rusks, mid-morning and afternoon tea/coffee
with snacks

Two course set menu at the Manor Kitchen (for up to 50 guests)

Your full rate for the Half Day Package includes the following:

Room hire and setup by the Lanzerac Team

Unlimited WiFi usage

Usage of Screen/LED, HDMI connection and multiplugs -

Ideal for hybrid meetings

Podiums and flip charts

Notepad and pen per person

Still and sparkling water

Arrival tea/coffee/rusks, mid-morning and afternoon tea/coffee
with snacks

Two course set menu at the Manor Kitchen (for up to 50 guests)

Half Day Morning:

08h00 - 13h00, including lunch

Half Day Afternoon:

12h00 - 17h00, including lunch

For up to 15 guests and includes room setup by the Lanzerac Team, arrival tea/coffee with savoury snacks, notepad and pen per person, still/sparkling water, usage of Screen/LED, HDMI connection and multiplugs, ideal for hybrid meetings and unlimited WiFi.

Additional items not included but available:

(Price on request)

Halaal/Kosher meals are charged

PA System with one microphone

Additional microphone

Additional flip chart

Data projector

Conference phone

Specialized technician

Hybrid facilities

*Evening Conferences - Quote on request

Contact Us

Stellenbosch, Cape Winelands, South Africa
No. 1 Lanzerac Road, Stellenbosch, 7600

+27 (0)21 887 1132 | events@lanzerac.co.za

www.lanzerac.co.za |   [@lanzeracestate](#)

